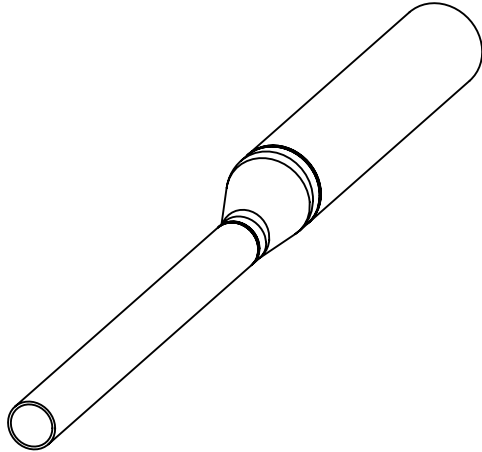


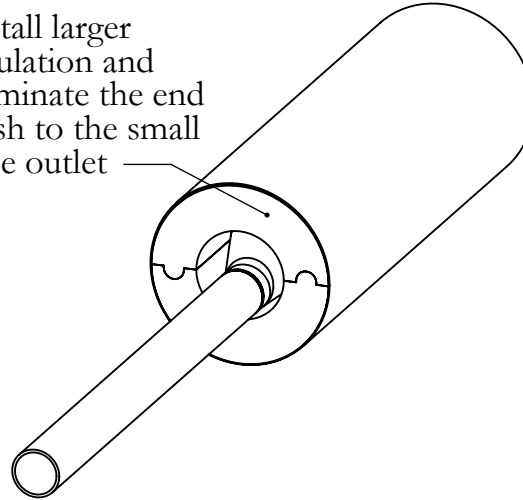
Eccentric Reducer Insulation Guide

Assembly to be insulated:



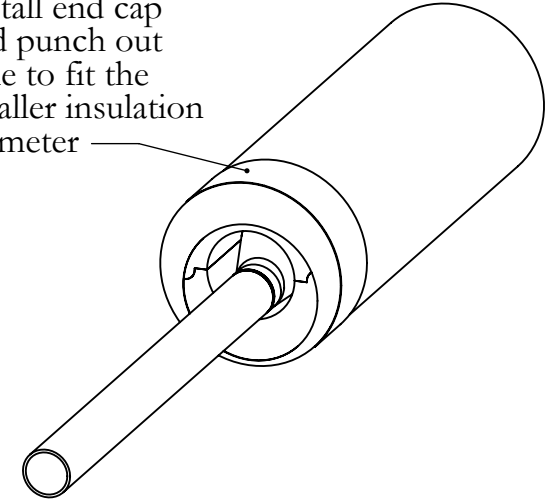
Step 1:

Install larger insulation and terminate the end flush to the small pipe outlet



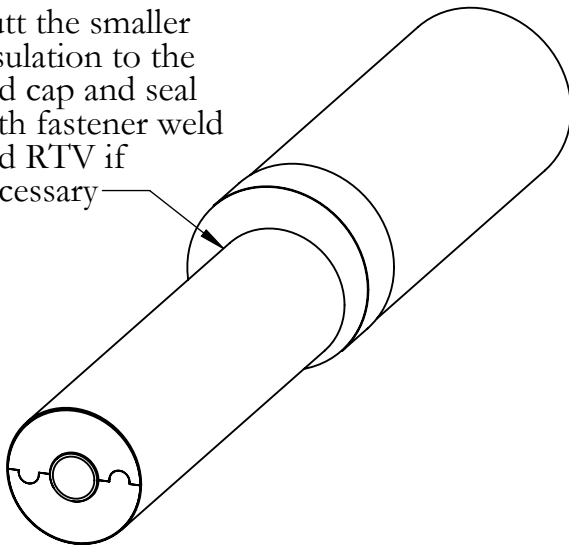
Step 2:

Install end cap and punch out hole to fit the smaller insulation diameter

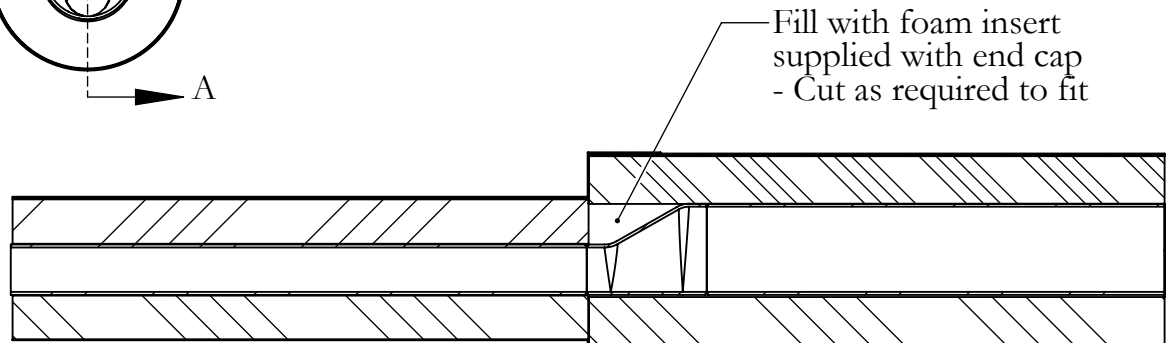
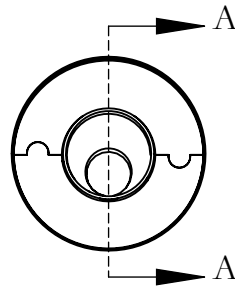


Step 3:

Butt the smaller insulation to the end cap and seal with fastener weld and RTV if necessary



Section View:



SECTION A-A
 SCALE 1 : 4